



Helping you build a **data driven** HR consultancy

Ten Space - Partner Programme





Ten Space is a cloud-based employee engagement platform.

We partner with UK-based HR consultants to help them provide a critical service for their clients – regular engagement surveys.

Ten Space saves you time and delivers data that helps you grow your consultancy revenue.

Become a Ten Space partner and we'll help transform the way you work.





Contents

Partner with Ten Space

4

The Ten Space platform

5

Why become a partner?

6

Pricing

7

Next steps

8





Partner with Ten Space

Building a HR & Employment Consultancy can be hard. It can feel like a treadmill of winning clients, providing services and battling for retainers.

We get it....

We understand the pressure to provide value for your clients every month. We also understand that you'll manage a mix of clients that are unique that require a tailored approach.

Partner Proposition

What is it? >>

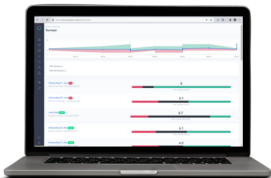
- Employee engagement survey tech, built for HR professionals
- For UK-based HR consultants with SME clients
- Gather the data to grow client accounts
- UK-based customer support to training your team and help you build revenue



The Ten Space platform

Ten Space helps your clients build higher engagement, higher colleague retention and better performance.

It is highly customisable, simple to use and perfect for your clients that operate desk-less, dispersed and mobile workforces.



- Build custom employee engagement surveys
- Higher response rates – send via email, WhatsApp and SMS
- Dashboards built exclusively for engagement data and trends over time
- Segmentation to understand deep workforce insights
- AI and 'heat-maps' built in to save days of data processing and discovery
- SSO, client reporting and permissions



Why become a partner?

Becoming a 'partner' helps you support your clients in a pro-active, data driven way. Our Employee engagement platform enables you to enhance your service offering and grow your business

1. Expand your service offering

Offer onboarding, pulse, engagement and exit surveys. Go deeper with performance and DE&I data to get to the core of issues.

2. Grow your revenue

Grow additional, monthly revenue from your survey offering. Use data to discover and unlock projects

3. Build a 'stickier' solution

Build closer client relationships based on 'data-driven' advice. Become central to your client's strategic plan

4. A long-term partnership

Our UK based team are here to train and empower you to get the most out of the platform and grow your business.



Pricing

Partner pricing is simple and affordable
to help you grow

Starter



- Add up to 10 clients
- Send 20 surveys per year
- Unlimited user accounts
- 2 x custom question sets
- Standardised segmentation
- TenSpace Dashboards
- Account manager

From £350
per month

Growth



- Add up to 20 clients
- Send 50 surveys per year
- Unlimited user accounts
- Unlimited segmentation
- 5 x custom question sets
- Custom dashboards
- Account manager

From £550
per month

Enterprise



- Add unlimited clients
- Unlimited monthly surveys
- Unlimited user accounts
- Unlimited question sets
- Single sign-on
- Your branding
- Account manager

Custom
per month

Take a trial

Not sure if it will work for your clients?
Take our 3-month trial and put it to the test!



Next steps



Download the Ten Space Partner brochure



Book a **DISCOVERY** call and **DEMO** to learn more about Ten Space and our partner proposition



Review our 'Partner Agreement', sign and return



Onboarding - Our customer success team help you get everything set up and provide training



Add your clients and start to build additional recurring revenue





Helping you build stronger relationships

As you succeed, we succeed. Our UK-based support and customer success team help you get the most for the platform so you can build a client-focused approach that delivers real results.

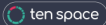




Become a Ten Space partner today

Call: 0161 676 3443

Email: partners@tenspace.co.uk



www.tenspace.co.uk

©2024 Ten Space Tech Ltd. 7 St. Petersgate, Stockport, England, SK1 1EB